

## Operational Specifications

Noise temperature	< 30K	Output P1dB	+10 dBm
L.O. stability	±5 kHz to ±25 kHz	Conversion Gain	60 dB
Input VSWR	2.2 : 1	Current Drain	300 mA MAX
Output VSWR	2.2 : 1	Gain Flatness	< 2 dB
Gain Variation	6 dBp-p max	Temperature Range	-40°C to +60°C

## Frequency Specifications

Input Frequency	3.40 to 4.20 GHz
L.O. Frequency	5.15 GHz
Output Frequency	950 to 1750 MHz
Optional 10 MHz	Internal / External

## Phase Noise (p/n 34320)

100 Hz	-60 dBc/Hz
1 kHz	-73 dBc/Hz
10 kHz	-83 dBc/Hz
100 kHz	-93 dBc/Hz
1 MHz	-120 dBc/Hz

## Phase Noise (p/n 34690)

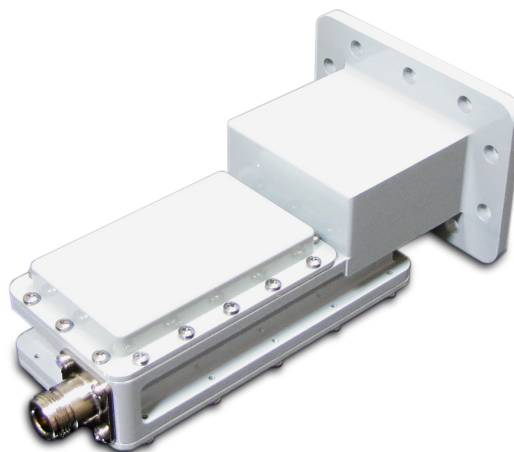
100 Hz	-75 dBc/Hz
1 kHz	-85 dBc/Hz
10 kHz	-93 dBc/Hz
100 kHz	-112 dBc/Hz
1 MHz	-130 dBc/Hz

## Physical Specifications

Length	7.25"
Width	3.875"
Height	2.875"
Weight	1.3 lbs. / 0.6 kg
Input Waveguide	CPR 229G
Connector	N-type

## L.O. Stability

1.5 ppm	± 7 kHz
2.0 ppm	± 10 kHz
5.0 ppm	± 25 kHz



\*Specifications subject to change